

ZL-2401 *Zwei L* Lever Bolt

Features

- Superior "Zwei L Finish" - *Zwei L* represents the very pinnacle of ultra-premium Japanese hardware design. The contrasting bands of mirror finish and lustrous satin on a faceted profile give a jewel like finish that highlights and enhances any industrial design

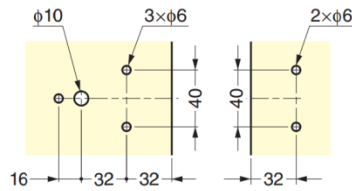
Sold Separately

- Indicator: **ZL-2401-INR** (for wood)
- Indicator: **ZL-2401-INR-GB** (for glass)

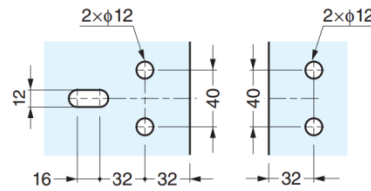


Cut Out Dimensions

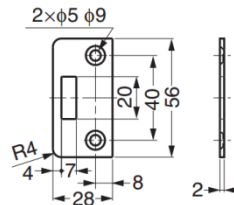
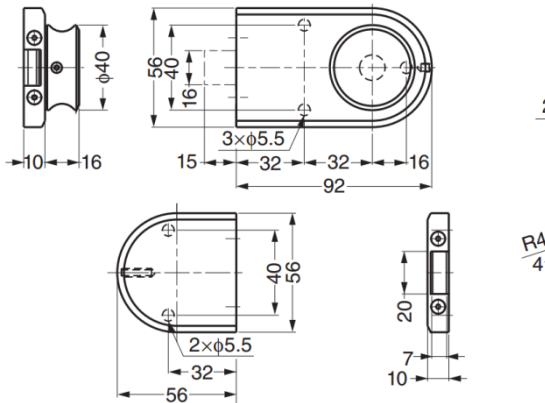
Door (wood)



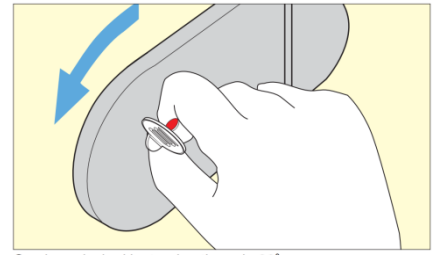
Door (glass)



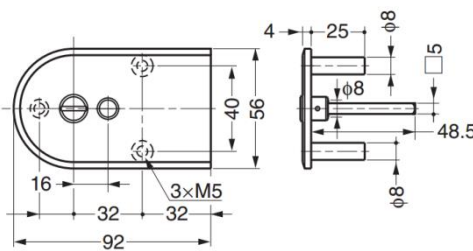
Indicator (Sold Separately)



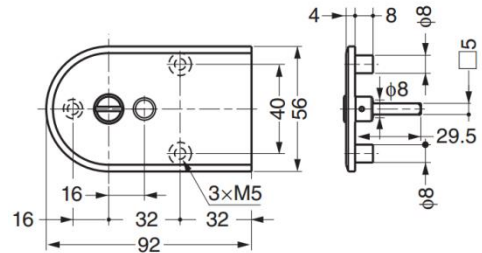
How to Open in Case of Emergency



Can be unlocked by turning the coin 90°.



Indicator: ZL-2401-INR (for wood)



Indicator: ZL-2401-INR-GB (for glass)

Body

Part No.	Door Thickness	Material	Finish
ZL-2401	Wooden Door: 28 ~ 40 Glass Door: 8, 10, 12	Stainless Steel 316	Zwei L

Indicator (Sold Separately)

Part No.	Type	Material	Finish
ZL-2401-INR	Wooden Door	Stainless Steel 316	Zwei L
ZL-2401-INR-GB	Glass Door	Stainless Steel 316	Zwei L